

RoHS

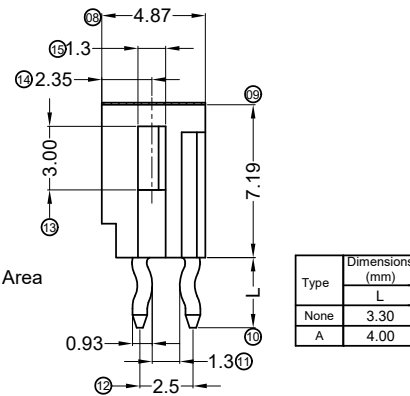
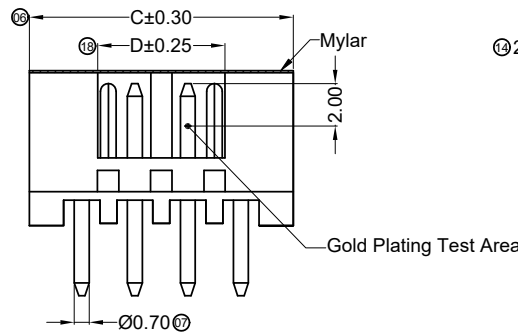
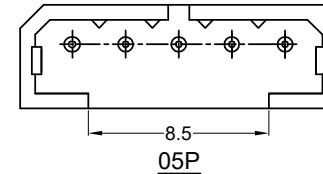
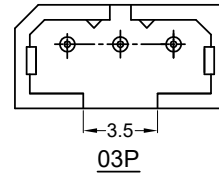
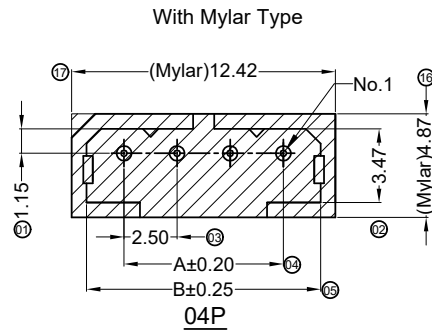
This products can apply to the SWB Doc NO. QA-3-04-005 of Environmental&Material Management Rules

■ Specifications :

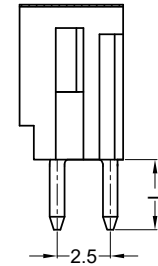
- Voltage rating: 250V AC / DC
- Current rating: 3A AC / DC
- Withstanding voltage: 1000V AC/minute
- Temperature range: -40°C~+105°C
- Insulation resistance: ≥1000MΩ
- Contact resistance: ≤20mΩ
- After environmental testing: ≤30mΩ
- Material(Pin): Brass
- Mates With SWB Housing 2502H

2502 W V X-XX XX - LP XX XX- X -XX
 ① ② ③ ④ ⑤ ⑥ ⑦ ⑧ ⑨ ⑩ ⑪

- ① Series No.
- ② Category: W-WAFER
- ③ Connector Type: V- 180°
- ④ Mounting Type: Blank-DIP
- ⑤ Row No.-Pin No.: XX-03P~05P
- ⑥ Special No.:
 K-With Kink ; A-DIP=4.00mm
 K-With Kink ; DIP=3.30mm
 Blank-Without Kink ; DIP=3.30mm
- ⑦ Material: LP-LCP 94V-0
- ⑧ Plating Category:
 SW-Matte Tin 100u" Min.; Ni 50u" Min.
 V30-Contact Area Gold 30u"Min.; Solder Area G/F;
 Ni 50u" Min.
- ⑨ Color: Blank-Natural Color
- ⑩ Package:
 Blank-Reel/With Mylar B-Bag/Without Mylar
- ⑪ DC-With Date Code Blank-Without Date Code

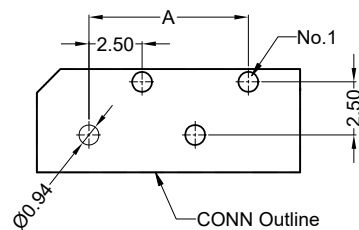


Type	Dimensions (mm)
L	3.30
A	4.00

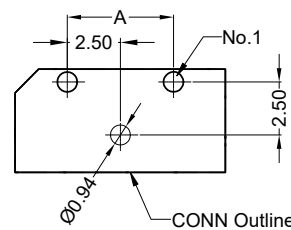


WITH KINK

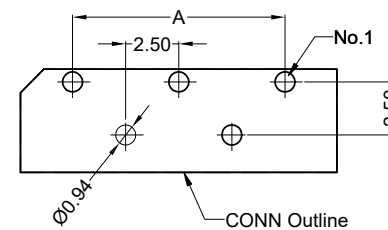
WITHOUT KINK



Recommended P.C.B Layout
 General Tolerance±0.05



Recommended P.C.B Layout
 General Tolerance±0.05



Recommended P.C.B Layout
 General Tolerance±0.05

Poles	Dimensions (mm)			
	A	B	C	D
03	5.00	8.52	9.92	3.50
04	7.50	11.02	12.42	6.00
05	10.00	13.52	14.92	8.50

GENERAL TOLERANCE						东莞市思索连接器有限公司 SWB CONNECTORS CO.,LTD				PART NO.				
PROJECT										2502WV-XXXX-LPXXXX-X-XX				
DATE	REV	ECN NO.	DESCRIPTION	MODIFY	APPROVAL	APPROVAL	CHECK	DRAWN	DATE	TITLE				
2020/08/03	K	EN20200803001	Update Drawing Frame	Joshua	Joshua					2.50mm Crimp Style Connector				
								sylvia	2018/08/16	UNIT	SCALE	SHEET	REV	NUMBER
										mm	1:1	1/1	K	A-000